

Biophilic Design

BioMontage addresses the human need to be in touch with the natural world by incorporating a diversity of natural materials into the built environment.

The BioMontage System

- Easy to install, two-piece frames that hold natural materials on walls.
- Quick and easy changes of natural material inserts and infinite design possibilities.
- BioMontage requires no light, maintenance or water.

Original Natural Inserts

- Preserved Reindeer Moss Panels in three popular colors.
- Sustainable Poplar Bark Panels.
- Light Stone Panels in two natural colors.

New Additions!

- Preserved Pole Moss in Vivid Green color.
- Preserved Long Moss in Deep Green color.
- Upcycled Mangium Tree Branch Tiles.
- Upcycled Coconut Tree Bark.

**WE INVITE YOU TO LEARN MORE
BY ENJOYING THIS BROCHURE!**



FLAMMABILITY TEST RESULTS

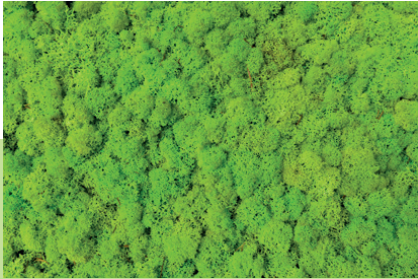
Reindeer Moss Panels

USA

ASTM E84, Class A



Natural Materials



Lime Green Reindeer Moss



Medium Green Reindeer Moss

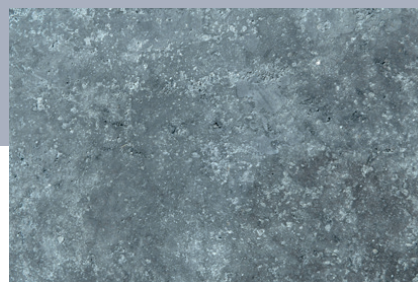


Forest Green Reindeer Moss

Our Reindeer Moss grows abundantly in vast Scandinavian forests and is harvested by hand in a way that ensures perfect renewal of the plant. The moss is preserved naturally and is 100% biodegradable and is also fire retardant. Reindeer moss is a very efficient acoustic modulator, making it a perfect biophilic design element in public places and offices.



Prairie Brown Light Stone



Mountain Grey Light Stone



Sustainable Poplar Bark

Our Light Stone panels are made from a combination of natural stone and resin, which is lighter and more manageable than raw stone. These naturally attractive panels come in two finishes which complement any interior: Prairie Brown and Mountain Grey.

Our sustainable Yellow Poplar tree bark comes from the Appalachian Hardwood Region of the U.S. The poplar wood is used for furniture production but the bark has limited practical uses. BioMontage helps prevent the bark from becoming waste. Our bark also has excellent acoustic properties.

new



Vivid Green Pole Moss

Harvested sustainably by hand in the forests of France, and preserved naturally, our Vivid Green Pole Moss presents a three dimensional, natural texture in a distinctive, long lasting color.

new



Deep Green Long Moss

Harvested in a natural, sustainable way in the forests of Turkey and preserved naturally, Long Moss is an elegant, cost-competitive alternative to Flat Moss. Long Moss holds its deep green color very effectively in virtually any interior environment.

new



Upcycled Coconut Tree Bark

When the Coconut tree can no longer produce its famous fruit, the tree is harvested and used in building construction and furniture production. The "Coco Bark," has very few uses and is often discarded. We hand-craft the small pieces into beautiful natural panels that fit perfectly into our BioMontage system.

new



Upcycled Mangium Tree Branches

The Mangium Tree is used primarily in furniture production. Branches are periodically cut from the tree and could easily become waste. We slice and trim the branches into small tiles, then combine the tiles to create a stunning natural mosaic which is an exciting new addition to the BioMontage range.







BioMontage

RECONNECT WITH THE NATURAL WORLD



3 Frame Sizes



12" x 24"



24" x 24"



48" x 24"

3 Frame Colors



Solid Shine
Black (SSBL)



Solid Shine
White (SSWH)



Solid Shine
Anthracite (SSAN)

Easy to install and easy to change



▪ Attach back frame to wall



▪ Insert Panel



▪ Attach Safety Clips



▪ Snap on Front Frame



When mounted together, the frames are beautifully spaced with a variety of natural finish options

For details on installation, please refer to the BioMontage® Installation Guide.

Changing Natural Inserts is easy as 1, 2, 3

1



2



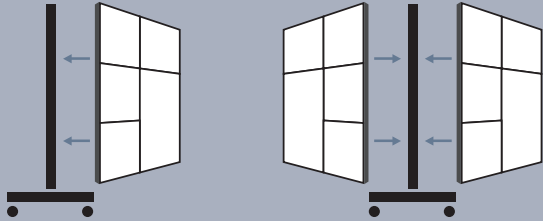
3



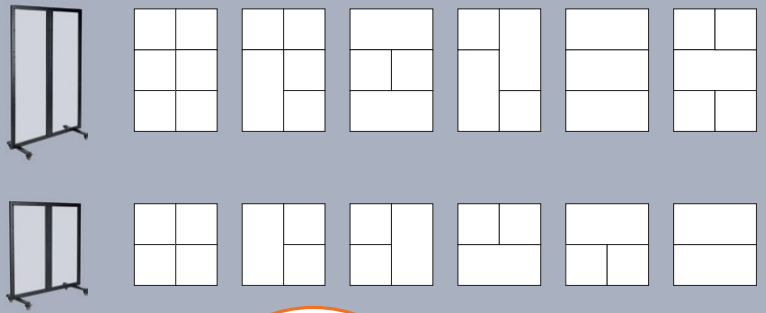
BioMontage® Room Dividers

One-sided or two sided

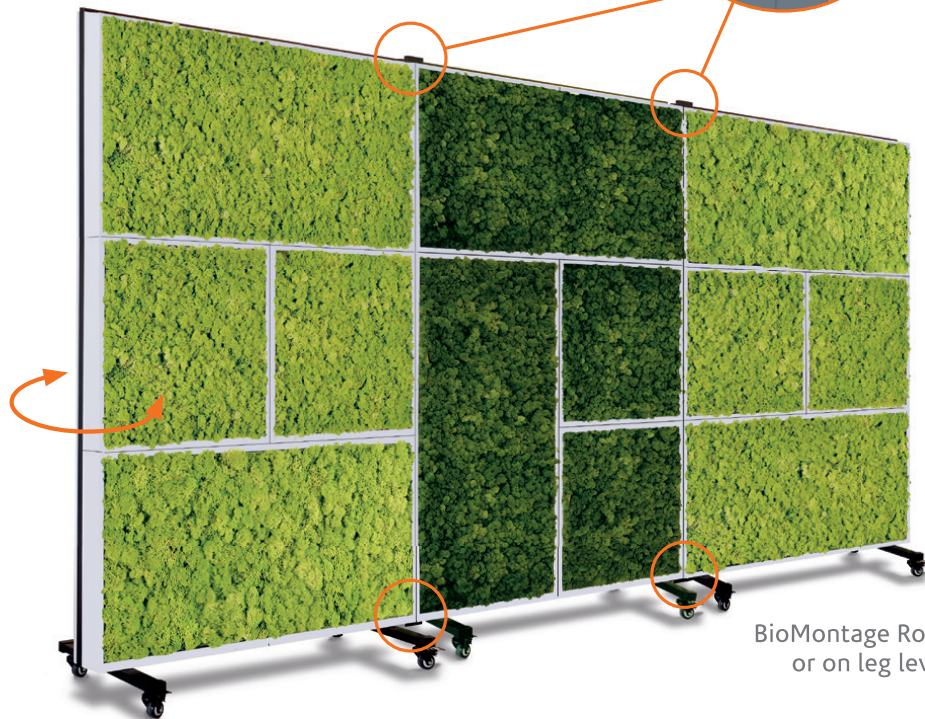
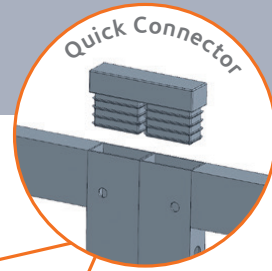
Frame dimensions on both sides need to match in case two-sided BioMontage Room Divider is being used



Various options possible



BioMontage Room Dividers can easily be connected to divide spaces permanently or just temporarily.



BioMontage Room Dividers are on wheels or on leg levelers if these are required.

Choose any of these natural finishes and dimensions for your Room Divider

Insert Choices: 24" x 24"



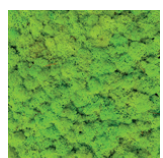
Sustainable Poplar Bark

Prairie Brown Light Stone

Mountain Grey Light Stone

Upcycled Coconut Tree Bark

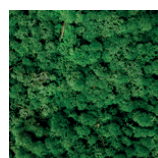
Upcycled Mangium Tree Branches



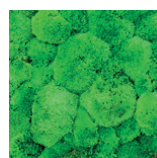
Lime Green Reindeer Moss



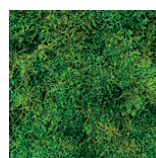
Medium Green Reindeer Moss



Forest Green Reindeer Moss



Vivid Green Pole Moss



Deep Green Long Moss

Insert Choices: 48" x 24"



Lime Green Reindeer Moss

Medium Green Reindeer Moss

Forest Green Reindeer Moss



Optional Base Cover

BioMontage® SPECIFICATIONS

BIOMONTAGE FRAMES	DIMENSIONS (INCHES)			FINISH
	L	W	DEPTH	
BM-FR-4824-SSBL	48	24	2.75	Solid Shine Black
BM-FR-4824-SSAN	48	24	2.75	Solid Shine Anthracite
BM-FR-4824-SSWH	48	24	2.75	Solid Shine White
BM-FR-2424-SSBL	24	24	2.75	Solid Shine Black
BM-FR-2424-SSAN	24	24	2.75	Solid Shine Anthracite
BM-FR-2424-SSWH	24	24	2.75	Solid Shine White
BM-FR-1224-SSBL	12	24	2.75	Solid Shine Black
BM-FR-1224-SSAN	12	24	2.75	Solid Shine Anthracite
BM-FR-1224-SSWH	12	24	2.75	Solid Shine White
REINDEER MOSS PANELS				
BM-AMP-4824-LG	47	23	1.5-2	Lime Green
BM-AMP-4824-FG	47	23	1.5-2	Forest Green
BM-AMP-4824-MG	47	23	1.5-2	Medium Green
BM-AMP-2424-LG	23	23	1.5-2	Lime Green
BM-AMP-2424-FG	23	23	1.5-2	Forest Green
BM-AMP-2424-MG	23	23	1.5-2	Medium Green
BM-AMP-1224-LG	11	23	1.5-2	Lime Green
BM-AMP-1224-FG	11	23	1.5-2	Forest Green
BM-AMP-1224-MG	11	23	1.5-2	Medium Green
POLE MOSS PANELS				
BM-PM-2424-VG	23	23	1.5-2	Vivid Green
LONG MOSS PANELS				
BM-LM-2424-DG	23	23	1.5-2	Deep Green
SUSTAINABLE BARK PANELS				
BM-BRK-2424-PL	23	23	1.25	Poplar
BM-BRK-1224-PL	12	23	1.25	Poplar
LIGHT STONE PANELS				
BM-LS-2424-PB	23	23	1.25	Prairie Brown
BM-LS-1224-PB	11	23	1.25	Prairie Brown
BM-LS-2424-MG	23	23	1.25	Mountain Grey
BM-LS-1224-MG	11	23	1.25	Mountain Grey
UPCYCLED COCONUT TREE BARK				
BM-CT-1224	11	23	1.25	Coconut
BM-CT-2424	23	23	1.25	Coconut
UPCYCLED MANGIUM TREE BRANCHES				
BM-MT-1224	11	23	1.25	Mangium
BM-MT-2424	23	23	1.25	Mangium
SAFETY CLIPS				
SC-1-SSBL	Safety Clip in Solid Shine Black			
SC-1-SSAN	Safety Clip in Solid Shine Anthracite			
SC-1-SSWH	Safety Clip in Solid Shine White			

ROOM DIVIDERS SPECIFICATIONS

4 FOOT MODELS	DESCRIPTION	DIMENSIONS (INCHES)		
		L	H	Depth
BM-RD-1S-4848*	48" x 48"H BioMontage One-Sided Room Divider	48	48	18
BM-RD-2S-4848*	48" x 48"H BioMontage Two-Sided Room Divider	48	48	18
6 FOOT MODELS				
DESCRIPTION				
BM-RD-1S-4872*	48" x 72"H BioMontage One-Sided Room Divider	48	72	18
BM-RD-2S-4872*	48" x 72"H BioMontage Two-Sided Room Divider	48	72	18
* Includes Metal Stand, Wheels, Assembly Hardware. Plastic Frames and Panel Inserts not included.				
OPTIONAL ITEMS				
BM-BP-4848-9010HS^	Back Panel for 4' Single Side Room Divider in High Shine White			
BM-BP-4872-9010HS^	Back Panel for 6' Single Side Room Divider in High Shine White			
NGRLL-0508	Leg Leveler (Set of 4)			
BM-QC	BioMontage Quick Connector			
BM-BC	BioMontage Base Cover			
^ Available in many other colors. Please call the office for more details.				



For more information, contact us at:

Office - 972.938.0085

Or contact Mark Teague directly at:

Cell - 214.802.6653

Or feel free to visit our website at:

www.plantation-tx.com